

Legend

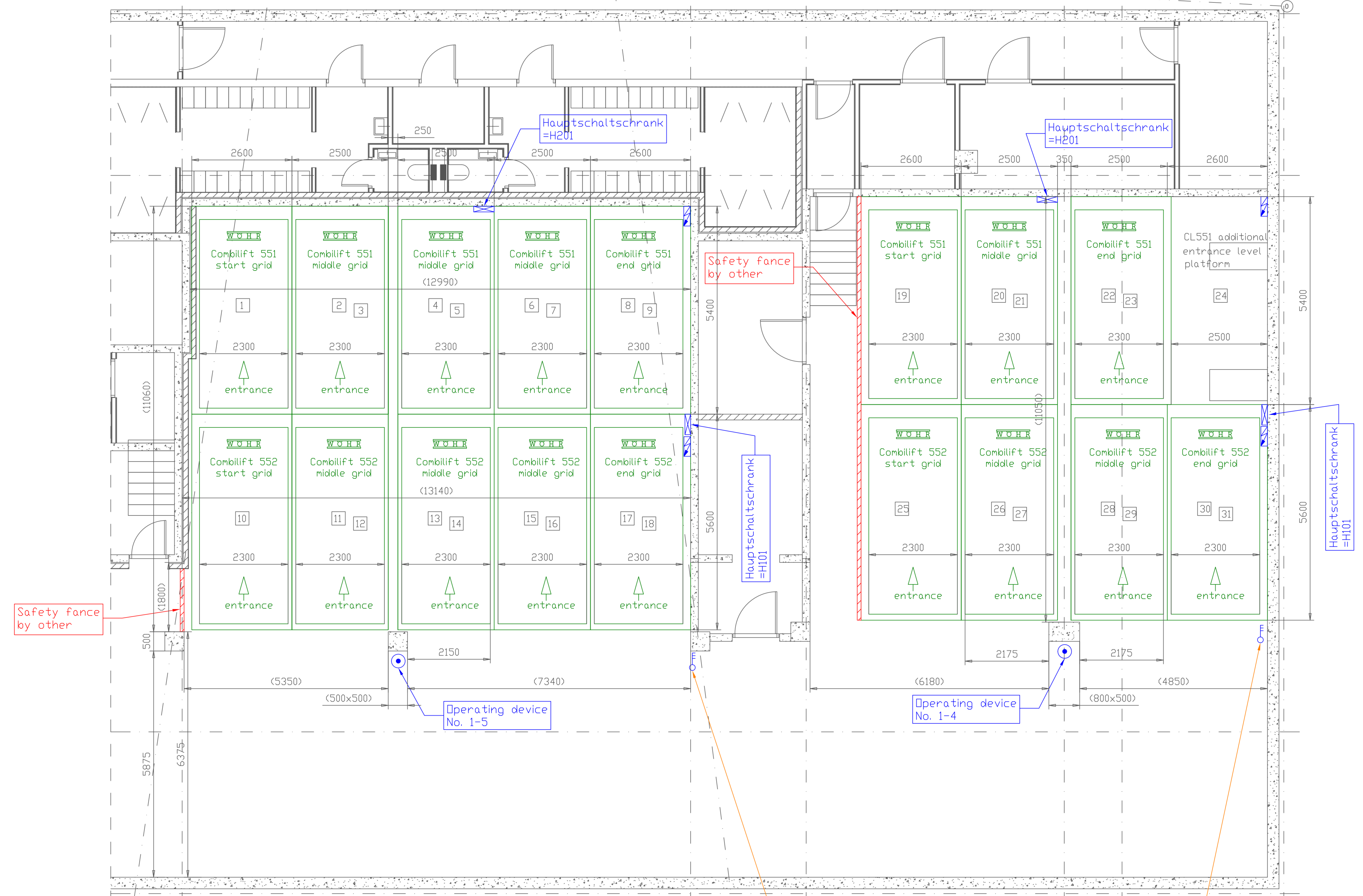
- Operating device RFID  
Assembled on a wall or column approx. 1200mm above ground level.
- Main switch  
Assembled on a wall or column approx. 1700mm above ground level.  
H 180mm / W 100mm / T 115mm
- Switch cabinet  
Assembled on rear wall or side wall  
W 600mm / H 1000mm / T 120mm
- Power-pack  
Assembled on a wall bracket  
3,0kW - 40

Numbering of parking bays System No. 190238-01  
Total number of parking bays 18  
System Comblift 551/552  
Hydraulic power-pack 3,0kW x2 (1x per row)  
Language operating device Norwegian

Grid	1	2	3	4	5	6	7	8	9	10	11	12
row 1 - VL 552S1	UL	1	2	3	4	5	6	7	8	9	10	11
EL	12	13	14	15	16	17	18	19	20	21	22	23
LP	24	25	26	27	28	29	30	31	32	33	34	35

Numbering of parking bays System No. 190238-02  
Total number of parking bays 13  
System Comblift 551/552  
Hydraulic power-pack 3,0kW x2 (1x per row)  
Language operating device Norwegian

Grid	1	2	3	4	5	6	7	8	9	10	11	12
row 2 - VL 552S1	UL	19	20	21	22	23	24	25	26	27	28	29
EL	30	31	32	33	34	35	36	37	38	39	40	41
LP	42	43	44	45	46	47	48	49	50	51	52	53



Main electrical supply 230/400V, 50 Hz, 3 Phase.  
Power consumption max. 3,0kW. Fuse or automatic circuitbreaker 3x16A slow blow acc. to DIN VDE 0100 p. 430 and main supply line 3 Ph+N+PE (acc. to local regulations) to the main switch, provided by others.  
In compliance with the DIN EN 60204 standard provisions, all systems must be connected directly with an earthed equipotential bonding (leadout connection at 10m distance).  
Supply by other.

Important notes

- All dimensions in mm
- All dimensions are minimum requirements
- Constructive modification reserved
- The shop drawing was especially made for the car parking systems.
- All conventional parking bays, ramps, driveways are not checked or confirmed.
- All entries in this shop drawing are just valid in conjunction with the appropriate W&H data sheet.

Revision / Index

Index	date	name	content
00	20.02.19	trb	drawing created
01	27.02.19	trb	doors removed
02	23.06.19	trb	Parking nr. 24/25 removed and single parking added
03	24.06.19	bd	corrections

W&H Autoparksysteme GmbH  
Blgrabenstr. 14, D-71292 Fritolzheim  
Braftsman Thoralf Rafn Bjarnason  
Tel. / Fax: +47 48 70 15 15  
E-Mail: trb@netris.kno

**Drammen stasjon**  
Project  
190238  
W&H order number  
Implementation planning  
Work phase  
Layout/Section - System 1 and 2  
Content  
Client drawing No:  
FloorPlan-PlanUJPV50.dwg  
Principle of W&H shop drawing

**W&H**  
Autoparksysteme GmbH

Drammen stasjon  
Project name  
03  
Index  
1/50  
Scale  
Garage  
Level  
27.02.19 / trb  
Braftsman

